



Cat[®] TH414

Telehandler

Specifications

Engine

Model	Cat [®] C4.4 DITAAC
Gross Power	74.5 kW/101 hp
Maximum Torque	410 Nm/1400 rpm
Bore	105 mm
Stroke	127 mm
Displacement	4.4 litre

Weights

Operating Weight with Carriage & Forks	9360 kg
--	---------

Operating Specifications

Rated Load Capacity	3700 kg
Maximum Lift Height	
Stabilizers Up	13 700 mm
Stabilizers Down	14 000 mm
Maximum Forward Reach	9225 mm
Top Travel Speed	32 km/h
Load at Max Height	
Stabilizers Up	2000 kg
Stabilizers Down	3700 kg
Load at Max Reach	
Stabilizers Up	350 kg
Stabilizers Down	1150 kg
Outside Turning Radius Over Tyres	3805 mm
Outside Turning Radius Over Forks	5640 mm

Service Refill Capacities

Fuel Tank	150 litre
Hydraulic Tank	90 litre

Tyres

Standard	15.5/80-24 16PR
----------	-----------------

Brakes

Service Brakes	Servo assisted on front axle
Parking Brakes	Mechanical on front axle

Hydraulic System

Maximum System Pressure	250 bar
Maximum Pump Flow	113 litre /min
Pump Type	Variable displacement load sensing axial piston pump
Auxiliary Hydraulic Supply	
Intermittent	80 litre/min
Continuous	60 litre/min

Transmission Speeds

Forward	
1	7 km/h
2	12 km/h
3	21 km/h
4	32 km/h
Reverse	
1	7 km/h
2	12 km/h
3	21 km/h

Boom Performance

Boom Up	13.0 Seconds
Boom Down	8.0 Seconds
Tele In	11.0 Seconds
Tele Out	11.0 Seconds
Crowd Forward (dump)	3.0 Seconds
Crowd Backward	3.0 Seconds
Combined	
Up and Out	23.0 Seconds
Down and In	13.4 Seconds
Drawbar Pull 74.5 kW	88,0 kN
Bucket Breakout Force to ISO 8313	65 kN
Boom Breakout Force	45 kN

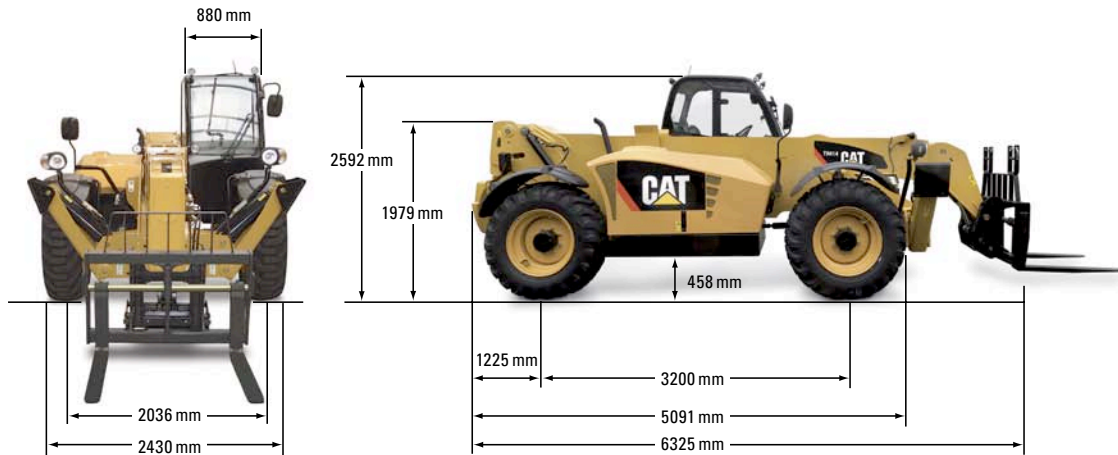
Sound

Operator Sound	78 dB(A)
Exterior Sound (74.5 kW Engine)	106 dB(A)

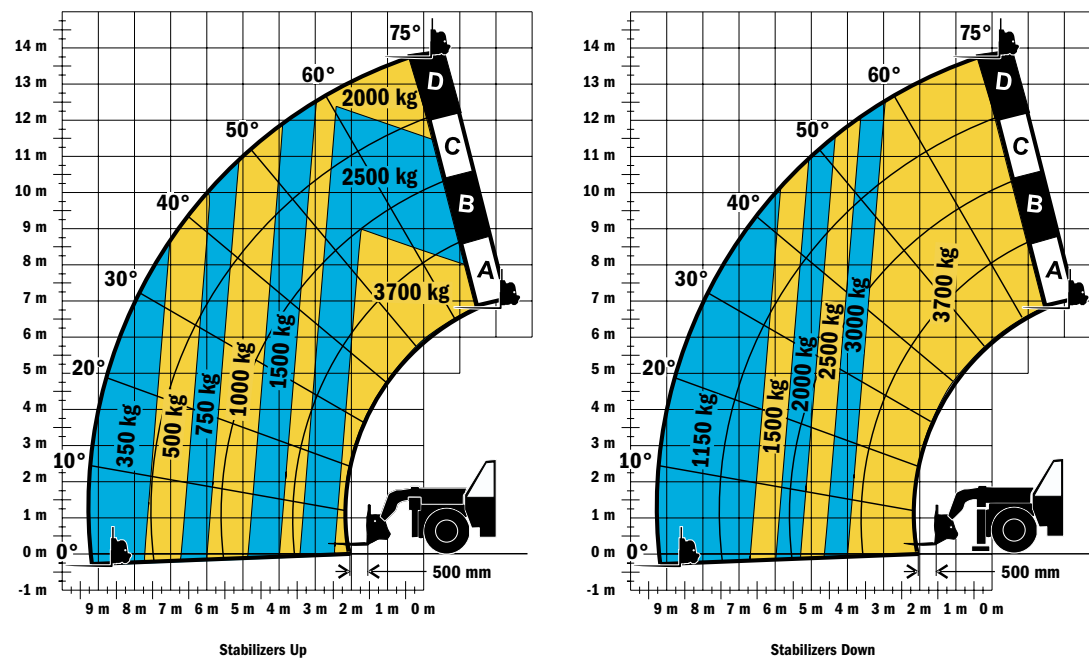
TH414 Telehandler

Dimensions

All dimensions are approximate.



Load Chart and Dimensions



IMPORTANT

Rated lift capacities shown are with machine equipped with carriage and pallet forks. The machine must be level on a firm surface with undamaged, properly inflated tyres. Machine specifications and stability are based on rated lift capacities at specific boom angles and boom lengths. (If specifications are critical, the proposed application should be discussed with your dealer.)

DO NOT exceed rated lift capacity loads, as unstable and dangerous machine conditions will result.

DO NOT tip the machine forward to determine the allowable load.

Due to continuous product improvements, machine specifications and/or equipment changes may be made without prior notification.